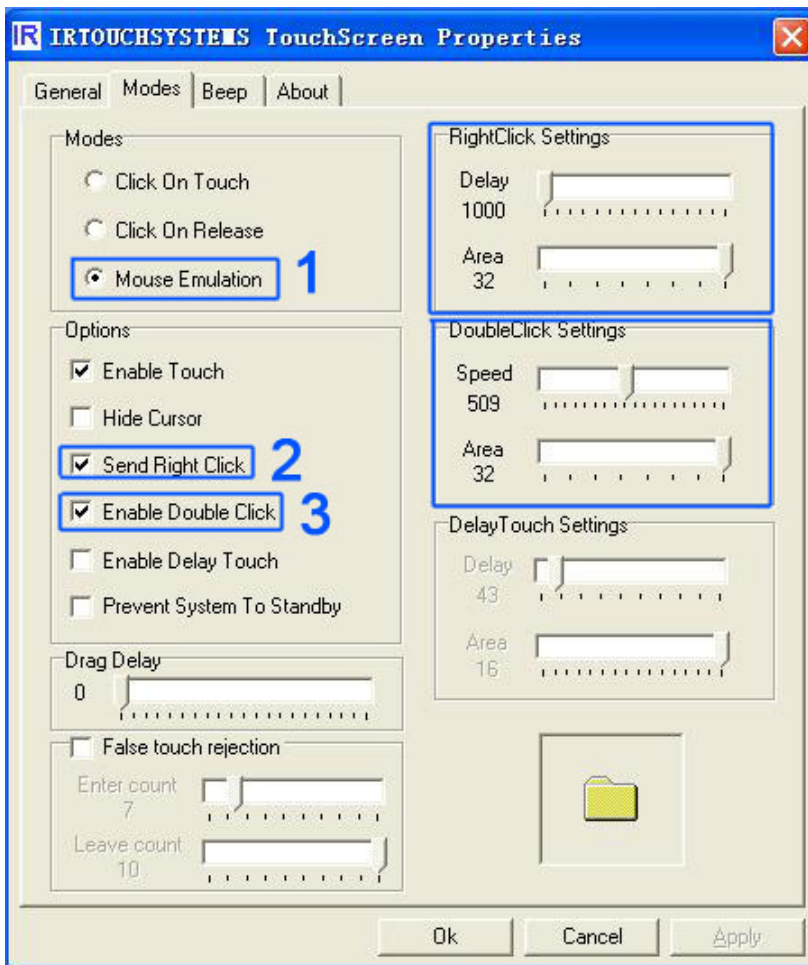


The general setting of touchscreen

(As reference)

Select "Mouse Emulation" mode, then choose "Enable Touch"、"Send Right Click"、"Enable Double Click". In general functions of "Enable Delay Touch" and "False touch rejection" may not selected to avoid slowing the touch response. It is proved null if you quickly click or drag the touch point.



Installment:

1. Send Right Click:

To enable right-click function (default). Click and press on any area on the screen for two second, the right-click menu will pop-up. Right-click is only available in Mouse Emulation mode. The "Delay" value is 1000(1second); The "Area" value is set to 32px at optimum.

2. Enable Double Click:

Same as the function of Mouse Double Click. Double click on the same setting area of objects in a short time may open up the object. "Speed" unit is at 500 to 550. "Area" unit is 32px.

3. Drag Delay:

The function show the amount of millisecond "Drag Delay" will take

to be enabled after you click that. Drag Delay may be adjusted to the correct value if the object can not be precisely selected or if jitter happens to cursor when you touch.

The unit is millisecond.

(Please refer to the User Manual for detailed information)